

SP-5500WA Advanced Display

SP5000 SERIES



Features:

- WVGA Display TFT Touch Panel
- 262,144 colors
- 12-24 Vdc input voltage
- 0-60C operating temperature
- Compatible with power or open box modules
- Embedded mounting clips for easy installation
- WVGA provides higher resolution than SVGA

Performance Specifications

Model	SP-5500WA
Graphics Display Resolution	1,280 x 800 pixels (WVGA)
Display Type and Size	TFT Color LCD 10"
Display Colors	262,144 colors
Effective Display Area	W217.0 x H135.6mm (W8.54 x H5.34 in.)
Touch Screen	Resistive film (analog)
Backlight	White LED (Not user replaceable. When replacement is required, contact your local distributor.)
Backlight Service Life	50,000 hours or more (continuous operation at 25 °C [77 °F] before backlight brightness decreases to 50%)
Brightness	Max.:400cd(Typ)/Min.:4cd(Typ) 0...100 (Adjusted with touch panel or software)*1

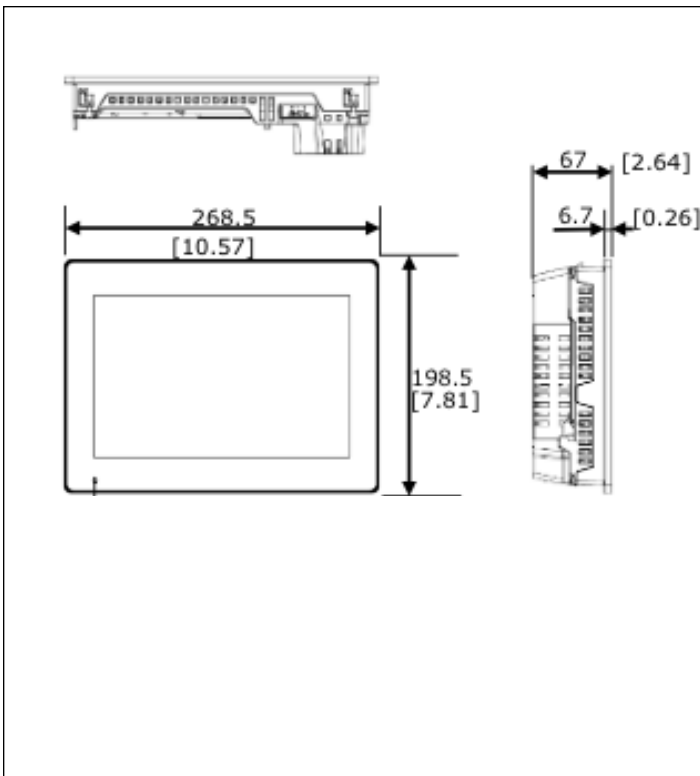
*1 The maximum and minimum brightness Value is the reference Value, because there are individual differences by the liquid crystal.

General Specifications

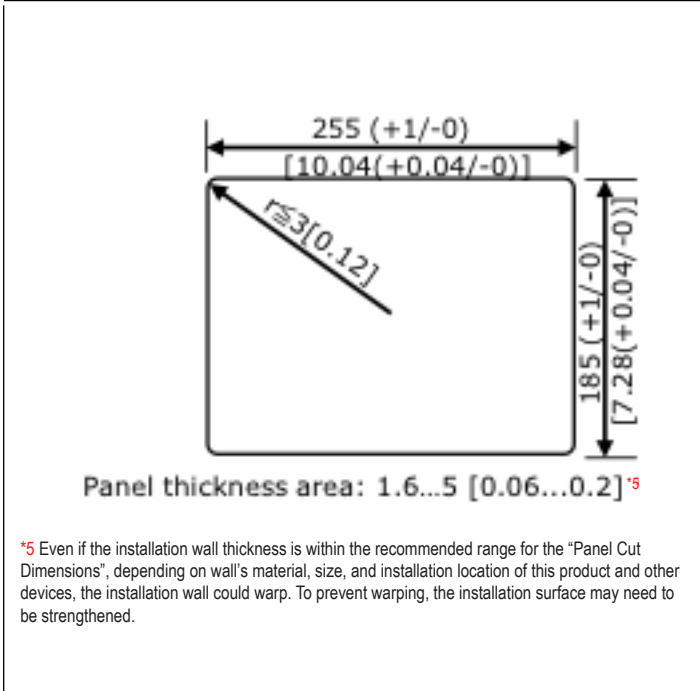
Models	SP-5500WA
Input Voltage	12-24 Vdc (limits 10.8 -29.9 Vdc)
Voltage Drop	12 Vdc: 1.25 ms or less/ 24 Vdc: 5 ms or less
In-Rush Current	30 A or less
Voltage Endurance	1,000 Vac, 20 mA for 1 minute (between charging and FG terminals)
Insulation Resistance	500 Vdc, 10 MQ or more (between charging and FG terminals)
Power Consumption*1	8.5W (max), 2.5 or less (When screen turns off the backlight (Standby Mode), 5W or less (when screen backlight 20%)
Surrounding Air Temperature	0...60 °C [32...140 °F]
Storage Temperature	-20...60 °C [-4...140 °F]
Certifications	CE, RoHS, GOST-R, UL/c-UL, KC
Ratings*2	IP66F, IP67F, TYPE 4X (Indoor Use Only)/13 (on the front panel when properly installed in an enclosure), ANSI/ISA 12.12.0 1, UL508, EN61000-6-4, EN61000-6-2, Class 1 Div 2 Groups A, B, C, and D
Surrounding Air and Storage Humidity	10%...90% RH (Non condensing, wet bulb temperature 39 °C [102.2 °F] or less)
Dust	0.1 mg/m3 (10-7 oz/ft3) or less (non-conductive levels)
Pollution Degree	For use in Pollution Degree 2 environment
Corrosive Gas	Free of corrosive gases
Atmospheric Pressure (Operating Altitude)	800...1,114 hPa (2,000 m [6,561 ft] or lower)
Vibration and Shock Resistance	IEC/EN 61131-2 compliant
Electrostatic Discharge Immunity	Contact Discharge Method: 6 kV (IEC/EN 61000-4-2 Level 3)
Weight*4	2.5kg (5.5 lb) or less
External Dimensions*3	W268.5 x H198.5 x D67mm (W10.57 x H7.81 x D2.64 in.)
Panel Cut Dimensions	W255 x H185 mm (W10.04 x H7.28 in.)
Warranty	

*1 Power Consumption for Display Module only, *2 The front face of this product, installed in a solid panel, has been tested using conditions equivalent to the standard shown in the specification. *3 When combined with Box Module, the depth is 67mm (2.64 in.). *4 For dimensional tolerance, everything +1/0 mm (+0.04/0 in.) and R in angle are below R3 (R0.12 in.) *4 Weight for Display Module only

External Dimensions



Panel-Cut Out Dimensions



*5 Even if the installation wall thickness is within the recommended range for the "Panel Cut Dimensions", depending on wall's material, size, and installation location of this product and other devices, the installation wall could warp. To prevent warping, the installation surface may need to be strengthened.

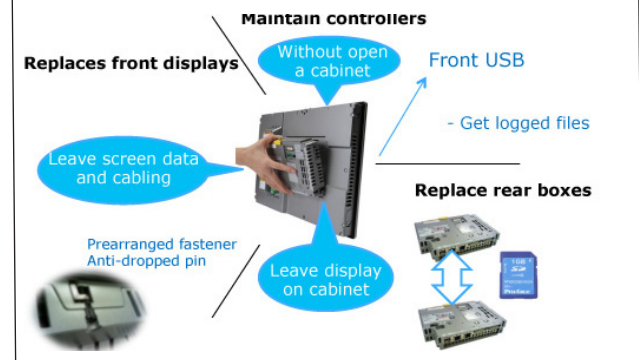
Ordering Information

Type	Model Numbers	Description
SP-5500WA	PFXSP5500WAD	10-inch TFT, 262,144 colors, WVGA 1280 x 800 pixels, Analog Touch Panel.

Options

Part Number	Product Name	Description
CA4-ATM10-01	Panel Cutout Adapter	Panel cutout adapter for mounting 10-inch Premium Display in cutout for GP-2500/2600 series, AGP-3500L/ AGP-3500S/AGP-36*0T/ AGP-36*0U.
PFXZCDDS102	10-inch Wide Screen Protection Sheet	Disposable, dirt-resistant sheet for the display (5 sheets/ set)
PFXZCDWG102	10-inch Wide Installation Gasket.	Provides dust and moisture resistance when SP is installed into a solid panel (1 piece)

Modular Design and Easy Maintenance



K.P.T. MACHINERY (1993) Co., Ltd.

259/83 Soi Phiboonves, Sukhumvit 71 Rd., Phrakanong-nur, Wattana, Bangkok 10110

E-mail: sales@kpt-group.com / marketing@kpt-group.com

Tel: 02-391-3030 Fax: 02-391-3021 www.kpt-group.com